



Oxfordshire Infrastructure Strategy (OxIS)

1

July 2017

Agenda Item 6

AECOM

The aims of the Oxfordshire Infrastructure Strategy

What we are doing and why

The aims of the OxIS study are:

- To set out the infrastructure investment needed to support jobs and housing growth in Oxfordshire
- To shape & influence investment strategies and plans at a national, sub- regional and local level
- To plan for infrastructure over a longer time horizon to 2040

This will help to support economic and housing growth in Oxfordshire by:

- Ranking the delivery of different types of infrastructure
- Helping us maximise the use of available and planned infrastructure capacity
- Helping us make better informed choices about the location of future growth
- Better positioning Oxfordshire in funding and investment discussions with Government
- Improving the quality and content of bids for external funding
- Informing and enhancing strategic developer funding negotiations
- Informing and facilitating dialogue with communities, developers and key stakeholders on the impact of growth
- Demonstrating the attractiveness of Oxfordshire as a business investment location
- Promoting the Oxfordshire 'brand' within the regional, national and international contexts

Infrastructure types that are covered by this study

TRANSPORT



Strategic Roads



Local Roads



Rail



Strategic Rapid Transit



Active Modes



Road Freight



Aviation

EDUCATION



Primary Education



Secondary Education & SEN



Further & Higher Education

HEALTH



Primary Healthcare



Hospitals



Social Care

EMERGENCY SERVICES



Ambulance



Police



Fire

GREEN INFRASTRUCTURE



Green Infrastructure

UTILITIES



Electricity



Gas



Renewable Energy



Potable Water



Waste Water



Broadband



Tele-Communications

WASTE & MINERALS



Waste & Minerals

FLOOD DEFENCES





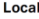


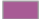





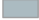






Flood Defences



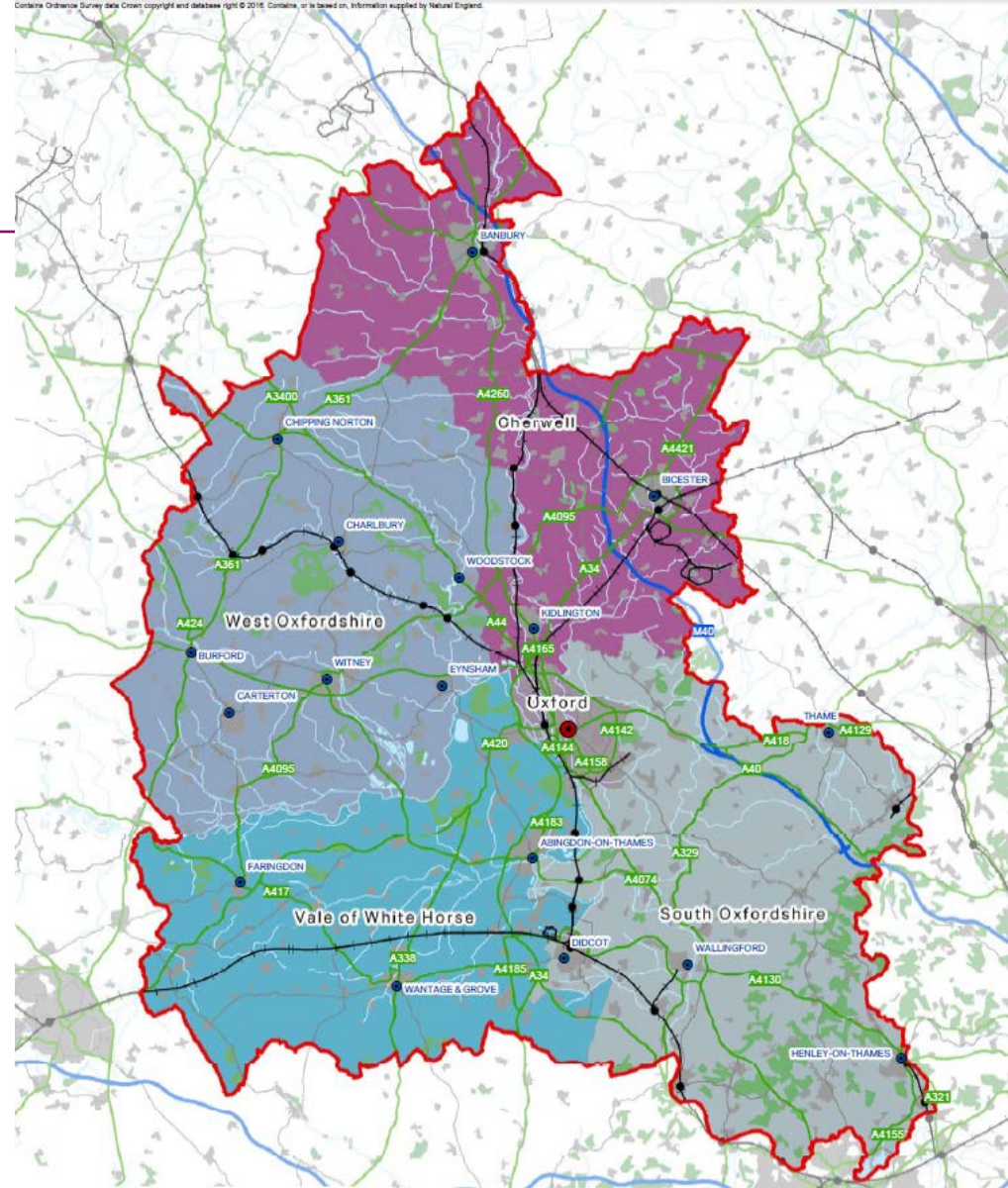
Drainage

The area that the study covers

Legend

	Oxfordshire County		Motorway		Local Authority
	Surrounding County		A Road		Cherwell
	City		B Road		Oxford
	Town / Large Village		Urban Area		South Oxfordshire
	Railway Station		Woodland		Vale of White Horse
	Railway		Waterbody		West Oxfordshire

4

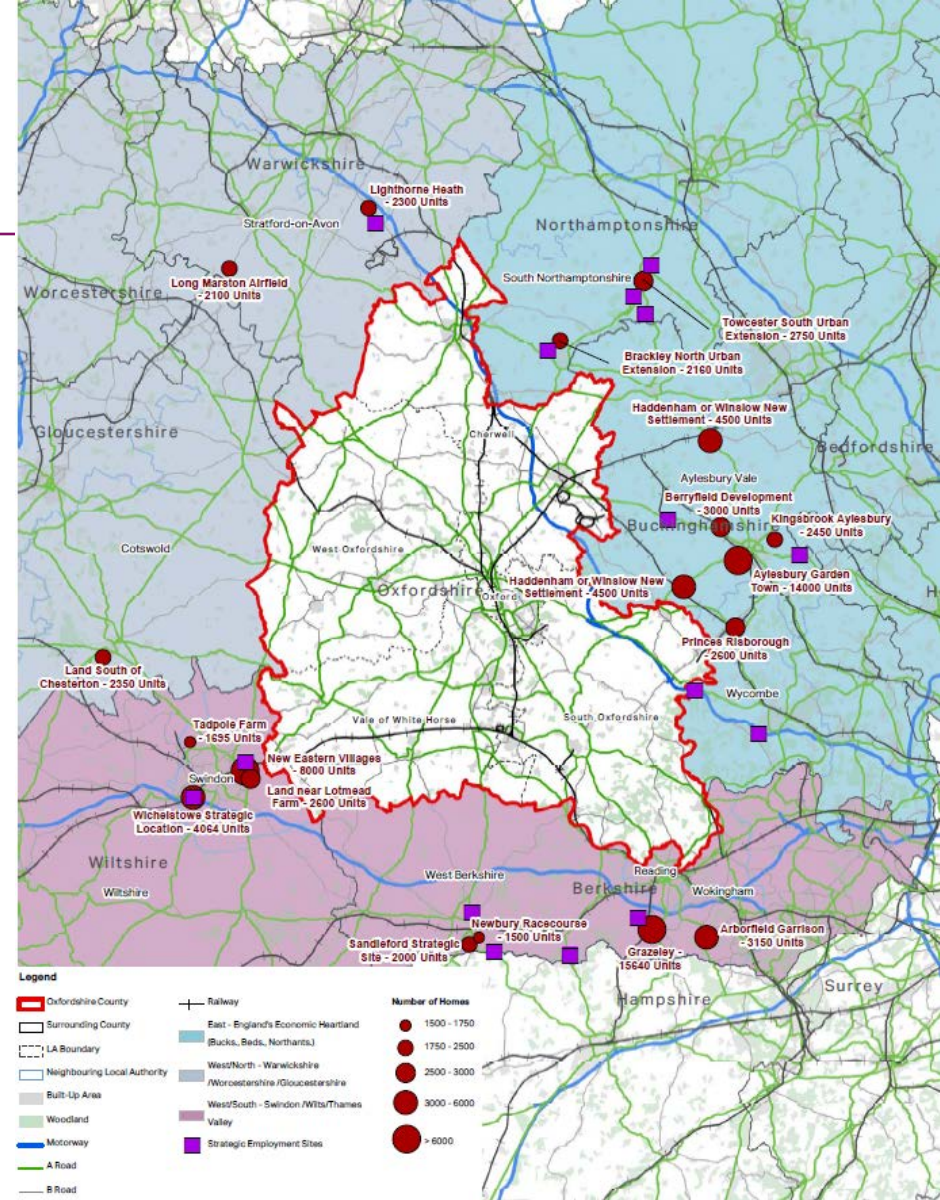


The OxIS study area in relation to the regional context

The focus of the OxIS study is on the needs of Oxfordshire, however it is important to understand these needs in the context of the wider region.

In particular, investment in Oxfordshire's infrastructure may have potential benefits for neighbouring areas and this can strengthen discussions with government.

Likewise, investment and growth near to Oxfordshire's border could also place additional demand on the county that needs to be taken into account.



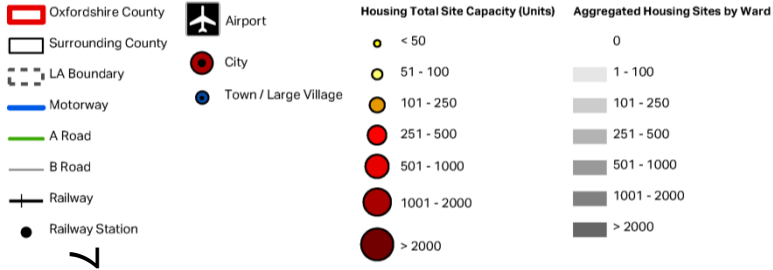
The key stages of the OxIS study

- Stage 1 Report (infrastructure evidence base) – October 2016 to April 2017
- Stage 2 (ranking of infrastructure) – May to mid Sept 2017
- Stakeholder and Public Engagement – July to early September 2017
- Oxfordshire Growth Board meeting (OxIS report on agenda) – 26th September 2017

STAGE 1 Findings Housing Growth Sites

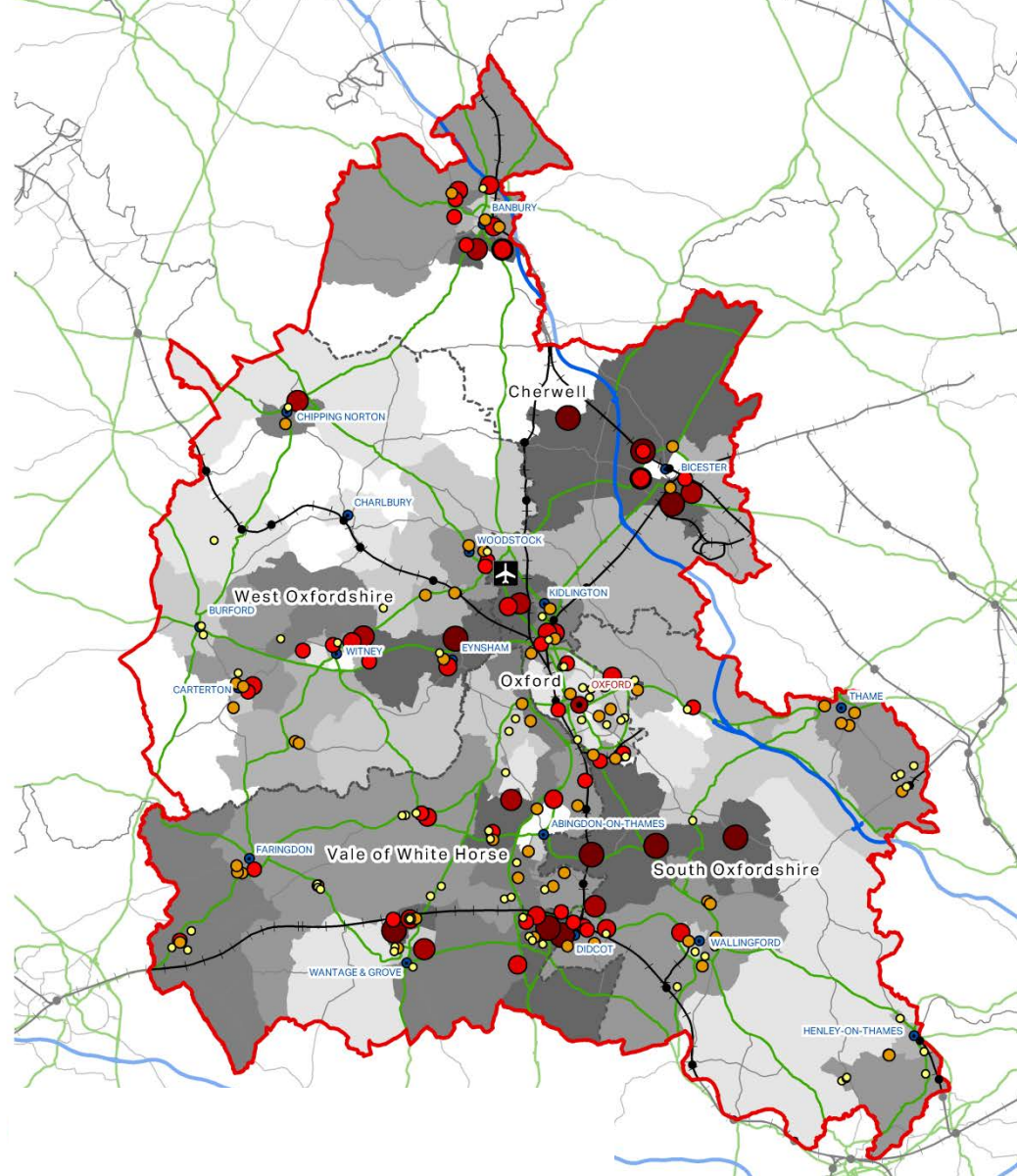
as set out in current adopted and draft/emerging local plans*

Legend



Identified Housing Sites

Oxfordshire Infrastructure Strategy



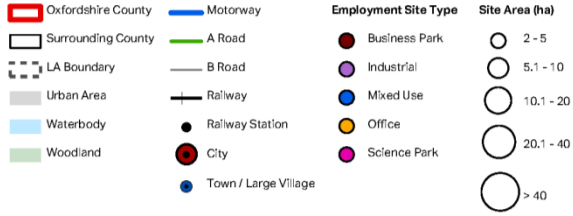
**This map was prepared prior to the publication of the South Local Plan. Sites in draft plans are also subject to change and OXIS will need to be regularly updated to reflect any changes*

STAGE 1 Findings

Employment Growth Sites

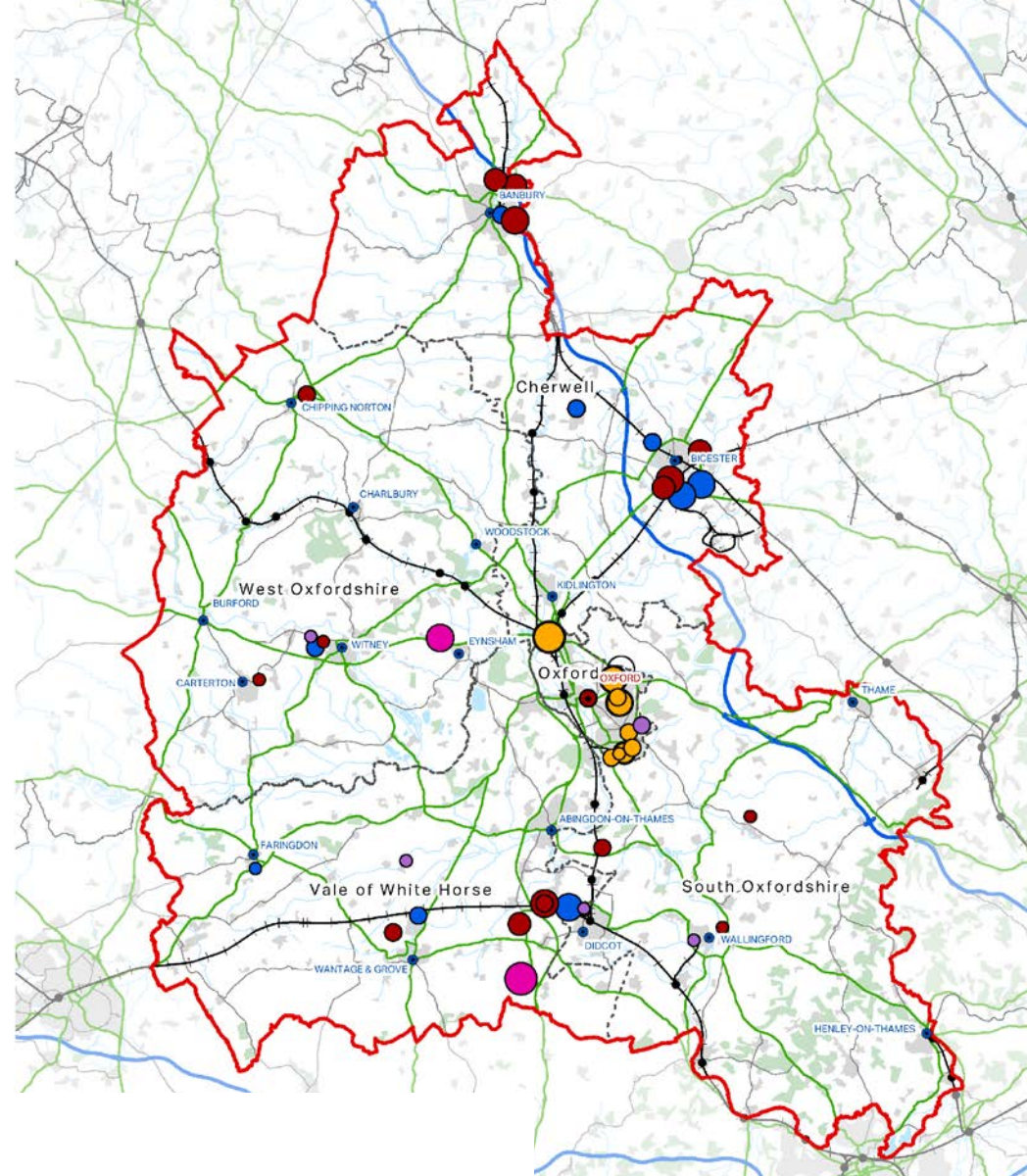
as set out in current adopted and draft/emerging local plans*

Legend



Identified Employment Sites

Oxfordshire Infrastructure Strategy



*sites in draft plans are subject to change, and OxIS will need to be regularly updated to reflect any changes

STAGE 1 Findings

Infrastructure Project Schedule

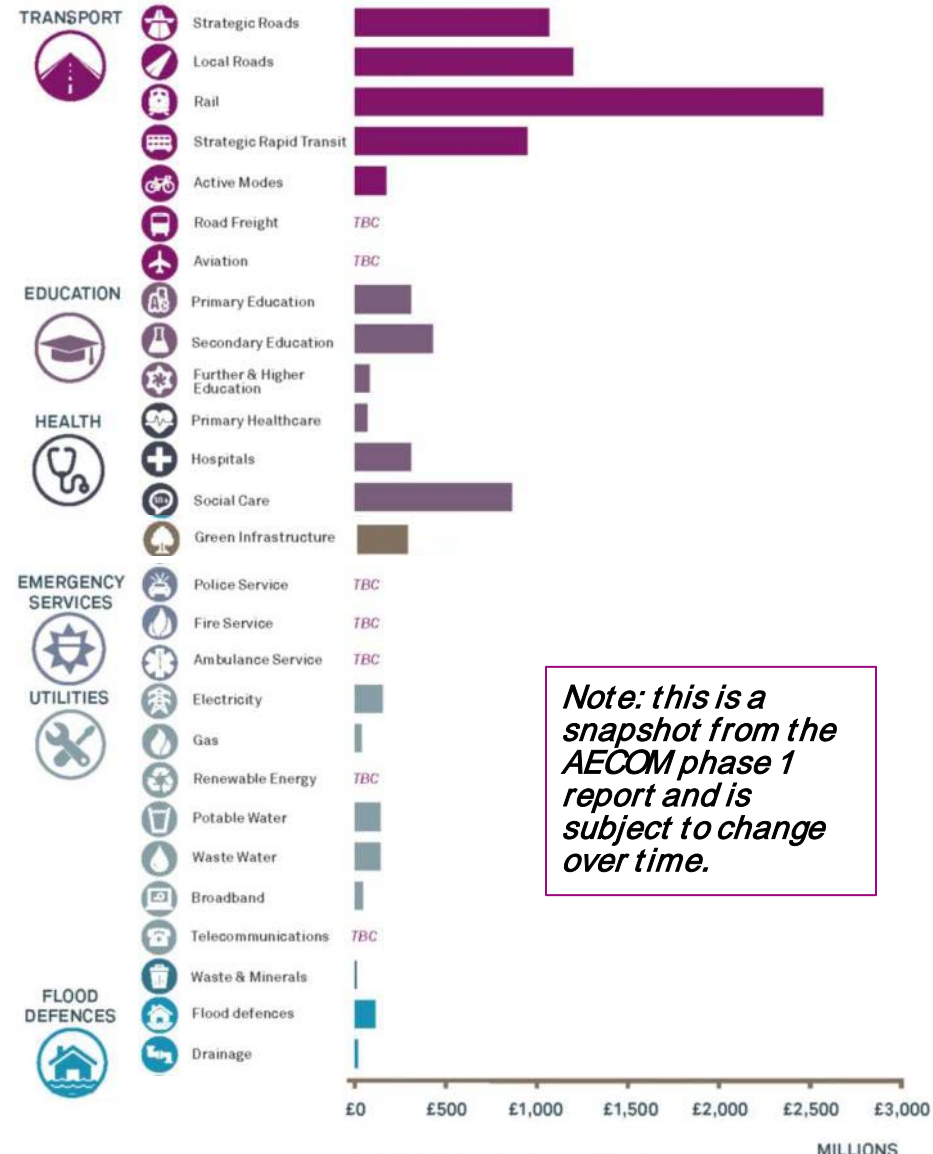
- Stage 1 output produced from a number of sources
- List of all infrastructure projects identified as critical and essential to support the assessed scale of housing and economic growth to 2040
- Key Information recorded:
 - Infrastructure type
 - Geography and location
 - Project status
 - Description of project
 - Delivery responsibilities
 - Timing of Requirement
 - Estimated Project Costs
 - Secured Funding
 - Estimated Potential Funding

STAGE 1 Findings

Costs and Funding Review

Headlines:

- 2016 – 2040 infrastructure costs: **circa £9 billion**
- 2016 – 2040 identified funding: **£500 million (limited to secured transport and flood defence)**
- Further potential funding sources and private sector delivery (utilities)
- **Funding Gap could reduce but remains considerable**



Note: this is a snapshot from the AECOM phase 1 report and is subject to change over time.

OxIS STAGE 2 Project Ranking

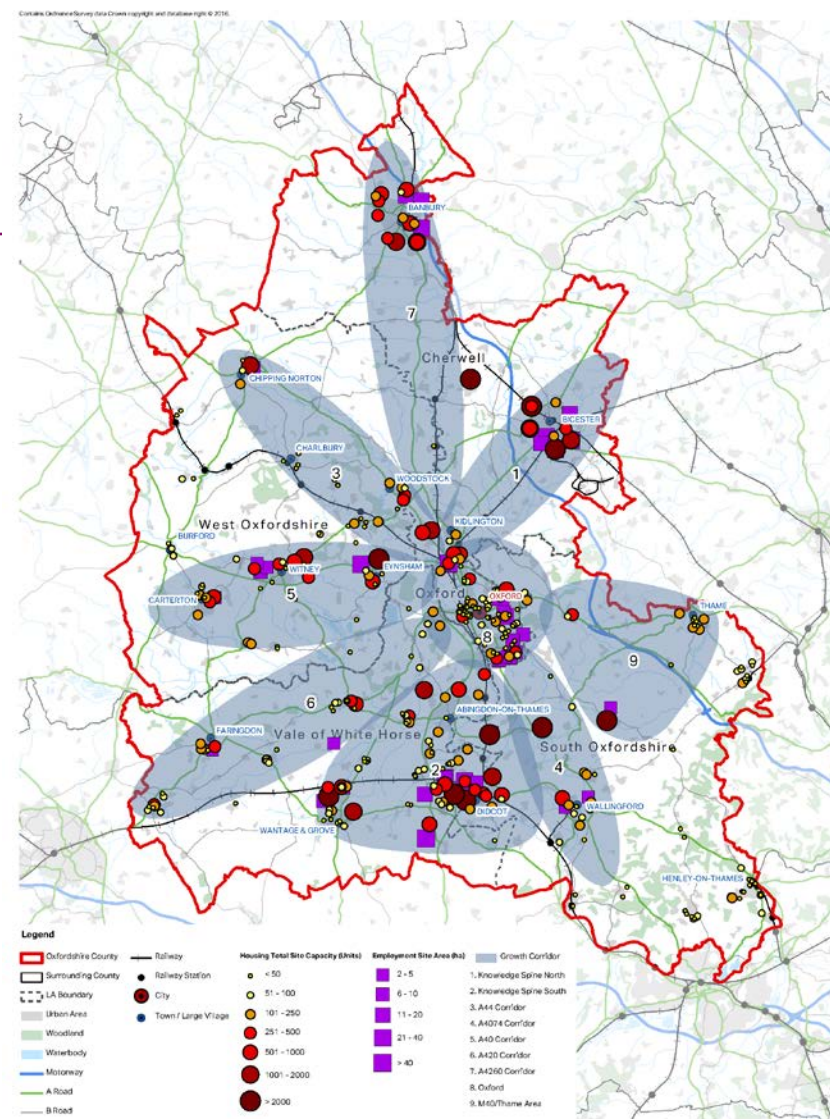
Why do we need to rank infrastructure investment?

- Limited public sector funding and developer contributions available, resulting in a gap of c. £9 billion in funding
- Need to extract the most value and efficiencies from the limited funding we have available
→
- A need to rank investment that directly support sites that will deliver the required economic and housing growth
- To demonstrate to Government and funding providers the investment needs that are required for Oxfordshire
- Demonstrate to residents what the county's infrastructure needs are, using a strong evidence base

GROWTH CORRIDOR PROFILES

Corridors of Growth & Investment

- To aid analysis, the OxIS study has grouped areas into 9 'growth corridors' which are:
 1. Knowledge Spine North
 2. Knowledge Spine South
 3. A44 Corridor
 4. A4074 Corridor
 5. A40 Corridor
 6. A420 Corridor
 7. A4260 Corridor
 8. Oxford
 9. M40 Thame Area



Identified Growth Sites

Oxfordshire Infrastructure Strategy



AECOM

OxIS STAGE 2 Project Ranking

How we will rank the infrastructure investment

- **Projects have been categorised into three broad groups. These groups represent the scale of influence that a project has on an area. These groups are:**
 - **Regional Infrastructure:**
Crossing or adjoining Oxfordshire and of National or Regional importance
 - **Countywide Infrastructure:**
Of Countywide importance, crossing multiple authorities
 - **Local Infrastructure:**
Focused within concentrations or corridors of growth

OxIS STAGE 2 Project Ranking

The 11 criteria definitions that projects will be scored against and ranked, summarised in four broad groups

Project Type

	Criteria name	Criteria Definition
1	Unblocking Stalled Development	Projects that address existing infrastructure capacity issues and unlock stalled development sites to enable growth.
2	Enabling New Development	Projects that address existing infrastructure capacity issues and enable new development sites to enable growth.
3 4	Mitigating Development	Projects that address the additional infrastructure burden generated by a proposed development site on existing infrastructure capacity through mitigation (either by expanding or improving existing infrastructure or providing new infrastructure).
4	Safeguarding Development	Projects that safeguard existing homes or jobs

Growth Supported

	Criteria name	Criteria Definition
5	Homes Supported	What scale of housing delivery is enabled by the implementation of this infrastructure project?
6	Jobs Supported	What scale of economic development (employment sites) is supported by the implementation of the infrastructure project

OxIS STAGE 2 Project Ranking

The 11 criteria definitions that projects will be scored against and ranked, summarised in four broad groups, continued...

Deliverability

	Criteria name	Criteria Definition
7	Level of Commitment	Projects that are committed to, in terms of funding and schemes which are at an advanced stage (i.e. Part funding in place) or a notable stage (i.e. published in plans (submission draft and above) would be considered a high priority as opposed to those that are initial ideas or the result of modeled need only).
8 5	Complexity of Delivery	The extent to which the infrastructure project has issues (outside funding) which may also require resolving prior to Delivery. Examples might include number of delivery partners involved, complexity of land assembly, length of construction period.
9	Interrelationships	The extent to which the infrastructure project has adverse or beneficial interrelationships with other projects

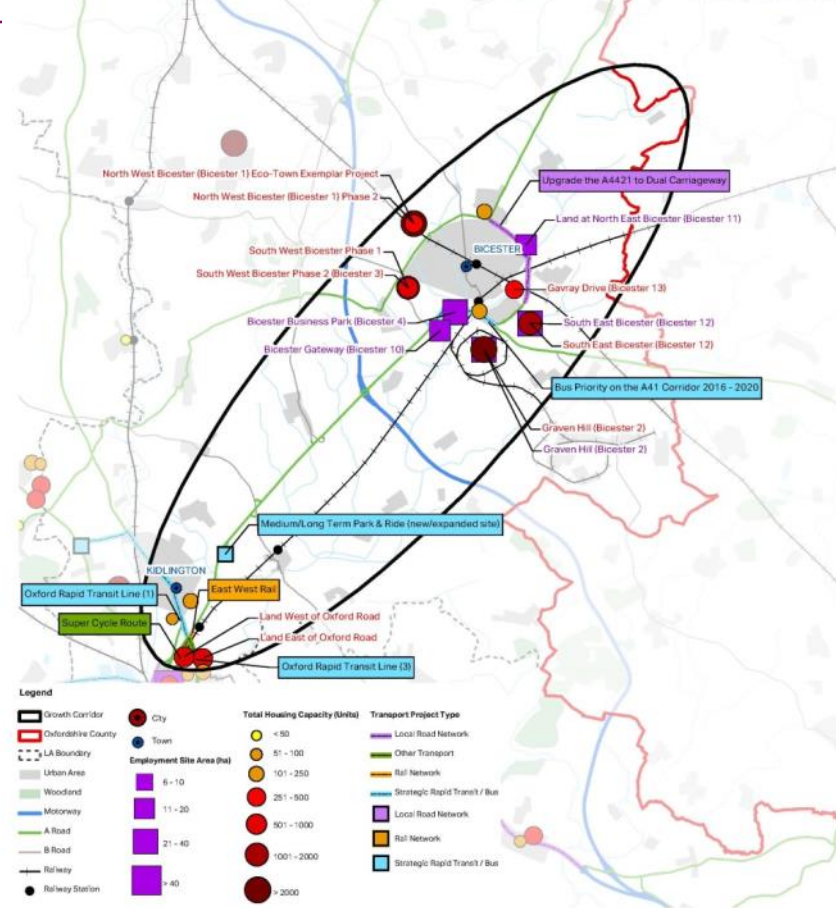
Associated Impacts

	Criteria name	Criteria Definition
10	Social Benefits	Extent to which project impacts upon health of population, employment opportunities, learning and skill development opportunities
11	Environmental Benefits	Extent to which project impacts upon natural and or urban environment and local air quality and noise

LOCAL GROWTH CORRIDORS

Example - Knowledge Spine North

- Key Growth Sites include:
 - North West Bicester / South West Bicester / South East Bicester / Graven Hill
 - Former RAF Upper Heyford
 - Land East of Oxford Road / Land West of Oxford Road
 - Employment - South East Bicester / Former RAF Upper Heyford / Bicester Business Park / Bicester Gateway
- Infrastructure Schemes include:
 - A34 – short and long term measures
 - A41 bus priority and Bicester to Aylesbury
 - East West Rail
 - London Road Level crossing
 - Bicester Sustainable Transport Strategy
 - South East Perimeter Road



Oxfordshire Growth Corridors -
(1) Knowledge Spine North



Communication and engagement approach

- Press release – includes input from Steering Group and each Council’s Communications team. Includes signpost to online information.
- Stakeholder engagement – to include infrastructure providers, community bodies and business groups
- Online materials consisting of slides, Frequently Asked Questions (FAQs) and questionnaire – hosted on www.oxfordshire.gov.uk/growthboard and linked from each Council website
- **Questions to be posed to the public:**
 1. How important is having a joined-up infrastructure strategy for Oxfordshire to you, your group or organisation and why?
 2. Do you have any other comments about the draft infrastructure strategy you wish to make?

Stage 2 report content

- Report findings of Stage 2 process including engagement
- Build upon Stage 1 technical report produced by independent consultancy, AECOM
- Introduce approach towards ranking
∞
- Present regional, countywide and local growth corridor infrastructure requirements to support growth
- Highlight potential investment needed and scale of funding challenge with potential options to address challenge

Next Steps

- **Stakeholder and Public Engagement** – July to early September 2017
- **Final report prepared** – Mid September 2017
- **Oxfordshire Growth Board meeting** (OxIS report on agenda) – 26th September 2017

This page is intentionally left blank